



# $\beta$ -tubulin (HRP Conjugated) Monoclonal Antibody(5G3)

<b>Catalog No</b>	YP-Ab-01148
<b>Isotype</b>	IgG
<b>Reactivity</b>	Human;Rat;Mouse;Mk;Dg;Ch;Hamster;Rabbit;sheep;Insect;Yeast
<b>Applications</b>	WB;IF;IHC
<b>Gene Name</b>	TUBB
<b>Protein Name</b>	Tubulin beta chain (Tubulin beta-5 chain)
<b>Immunogen</b>	Recombinant Protein of $\beta$ -tubulin (HRP Conjugated)
<b>Specificity</b>	The $\beta$ -tubulin antibody can detects endogenous $\beta$ -tubulin protein.
<b>Formulation</b>	Liquid in PBS containing 50% glycerol, 0.5% BSA and 0.02% sodium azide.
<b>Source</b>	Monoclonal, Mouse
<b>Purification</b>	The antibody was affinity-purified from mouse ascites by affinity-chromatography using epitope-specific immunogen.
<b>Dilution</b>	WB: 1:1000-1:3000,IHC: 1:50-1:200 IF 1:200
<b>Concentration</b>	1 mg/ml
<b>Purity</b>	$\geq 90\%$
<b>Storage Stability</b>	-20°C/1 year
<b>Synonyms</b>	Tubulin beta chain (Tubulin beta-5 chain)
<b>Observed Band</b>	55kD
<b>Cell Pathway</b>	Cytoplasm, cytoskeleton .
<b>Tissue Specificity</b>	Ubiquitously expressed with highest levels in spleen, thymus and immature brain.
<b>Function</b>	domain:The highly acidic C-terminal region may bind cations such as calcium.,function:Tubulin is the major constituent of microtubules. It binds two moles of GTP, one at an exchangeable site on the beta chain and one at a non-exchangeable site on the alpha-chain.,online information:Tubulin entry,similarity:Belongs to the tubulin family.,subunit:Dimer of alpha and beta chains.,tissue specificity:Ubiquitously expressed with highest levels in spleen, thymus and immature brain.,
<b>Background</b>	This gene encodes a beta tubulin protein. This protein forms a dimer with alpha tubulin and acts as a structural component of microtubules. Mutations in this gene cause cortical dysplasia, complex, with other brain malformations 6. Alternative splicing results in multiple splice variants. There are multiple pseudogenes for this gene on chromosomes 1, 6, 7, 8, 9, and 13. [provided by RefSeq, Jun 2014],



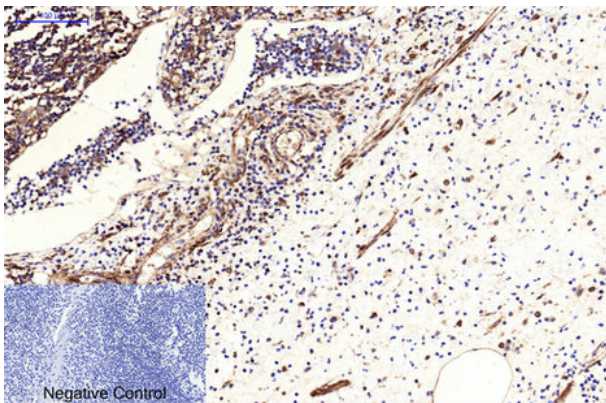
**matters needing attention**

Avoid repeated freezing and thawing!

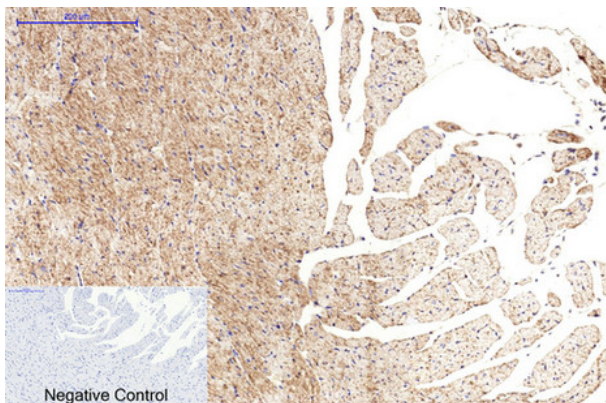
**Usage suggestions**

This product can be used in immunological reaction related experiments. For more information, please consult technical personnel.

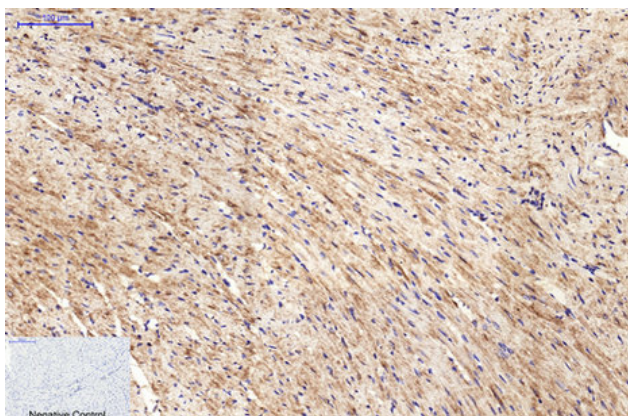
**Products Images**



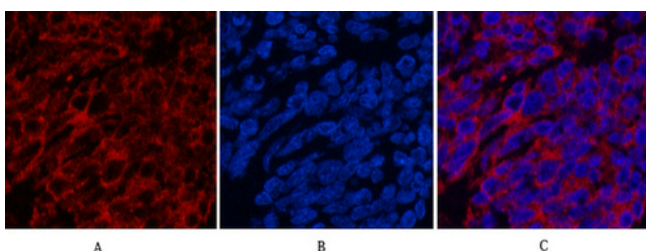
Immunohistochemical analysis of paraffin-embedded Human-Tonsil tissue. 1,  $\beta$ -tubulin (HRP Conjugated) Monoclonal Antibody(5G3) was diluted at 1:200(4° C,overnight). 2, Sodium citrate pH 6.0 was used for antibody retrieval(>98°C,20min). 3,Secondary antibody was diluted at 1:200(room temperature, 30min). Negative control was used by secondary antibody only.



Immunohistochemical analysis of paraffin-embedded Rat-heart tissue. 1,  $\beta$ -tubulin (HRP Conjugated) Monoclonal Antibody(5G3) was diluted at 1:200(4° C,overnight). 2, Sodium citrate pH 6.0 was used for antibody retrieval(>98°C,20min). 3,Secondary antibody was diluted at 1:200(room temperature, 30min). Negative control was used by secondary antibody only.



Immunohistochemical analysis of paraffin-embedded Mouse-heart tissue. 1,  $\beta$ -tubulin (HRP Conjugated) Monoclonal Antibody(5G3) was diluted at 1:200(4° C,overnight). 2, Sodium citrate pH 6.0 was used for antibody retrieval(>98°C,20min). 3,Secondary antibody was diluted at 1:200(room temperature, 30min). Negative control was used by secondary antibody only.

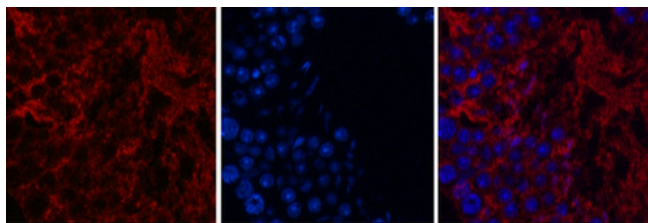


Immunofluorescence analysis of Human-lung-cancer tissue. 1,  $\beta$ -tubulin (HRP Conjugated) Monoclonal Antibody(5G3)(red) was diluted at 1:200(4° C,overnight). 2, Cy3 labeled Secondary antibody was diluted at 1:300(room temperature, 50min).3, Picture B: DAPI(blue) 10min. Picture A:Target. Picture B: DAPI. Picture C: merge of A+B

A

B

C



A

B

C

Immunofluorescence analysis of Mouse-testis tissue. 1,  $\beta$ -tubulin (HRP Conjugated) Monoclonal Antibody(5G3)(red) was diluted at 1:200(4°C, overnight). 2, Cy3 labeled Secondary antibody was diluted at 1:300(room temperature, 50min). 3, Picture B: DAPI(blue) 10min. Picture A: Target. Picture B: DAPI. Picture C: merge of A+B